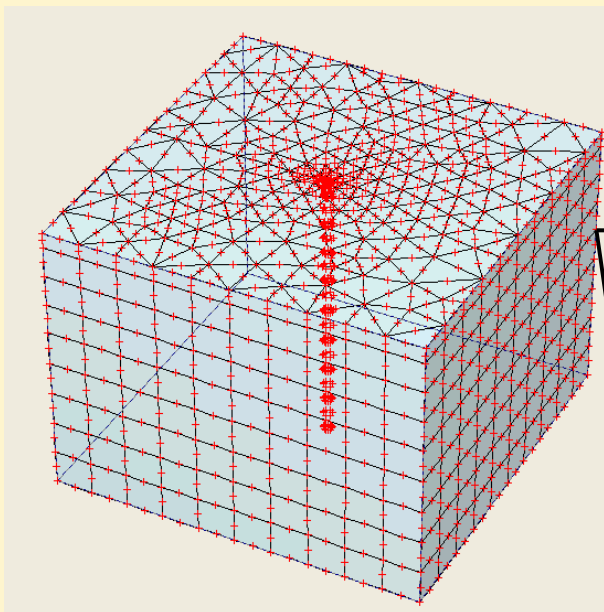
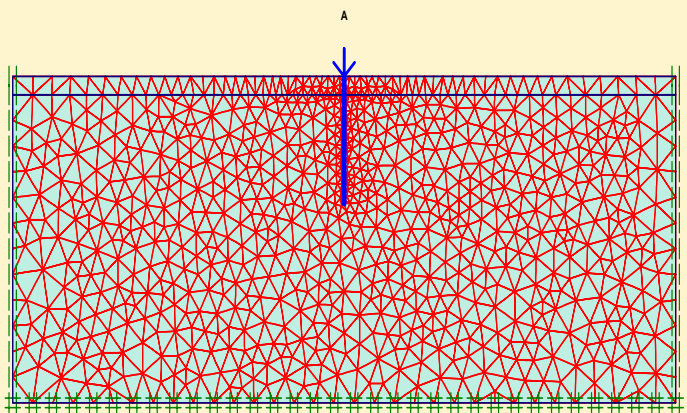


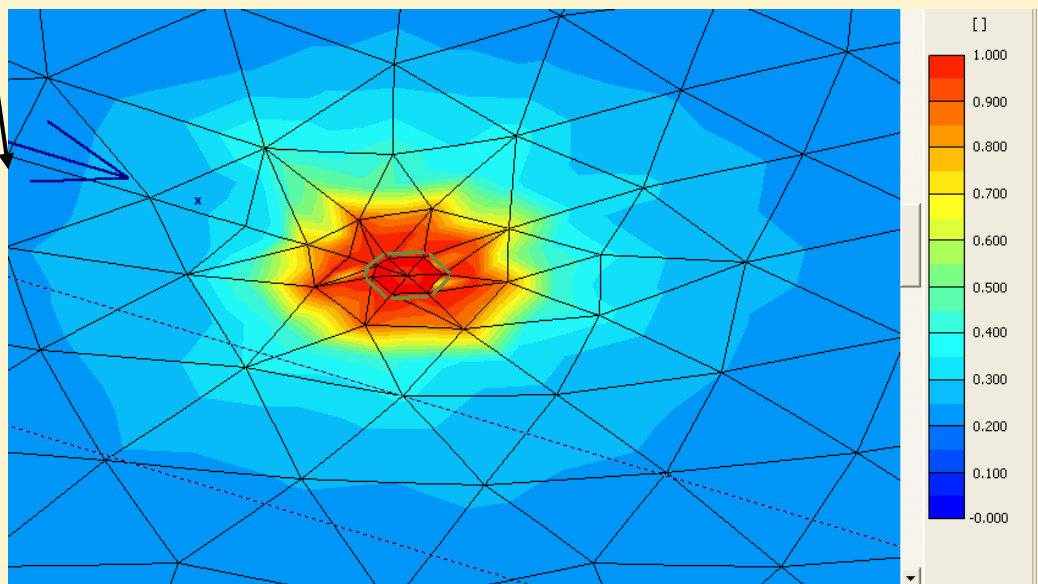
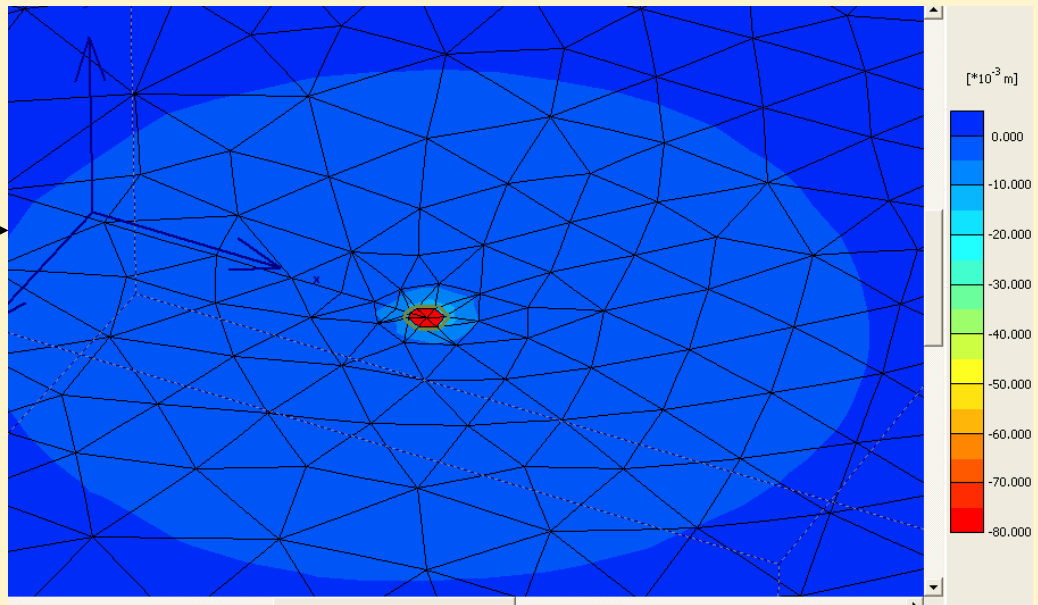
KẾT QUẢ THEO SƠ ĐỒ 3D

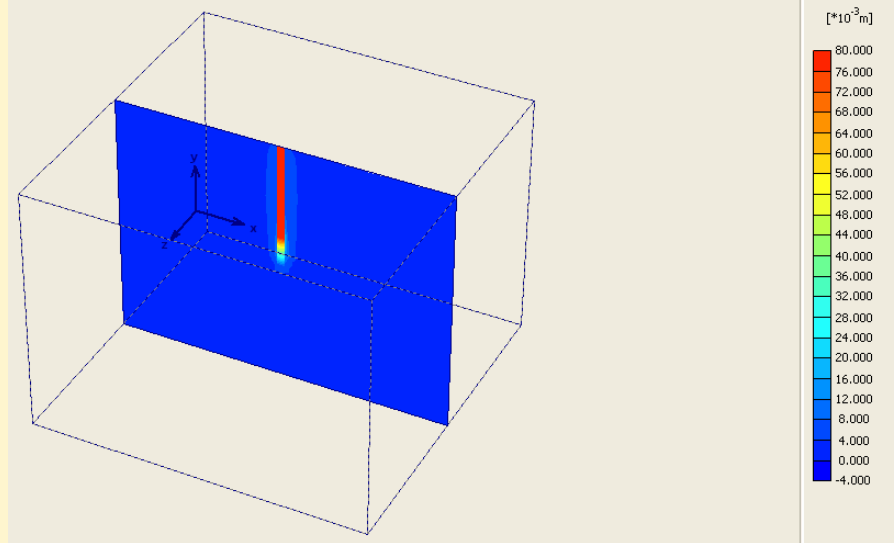
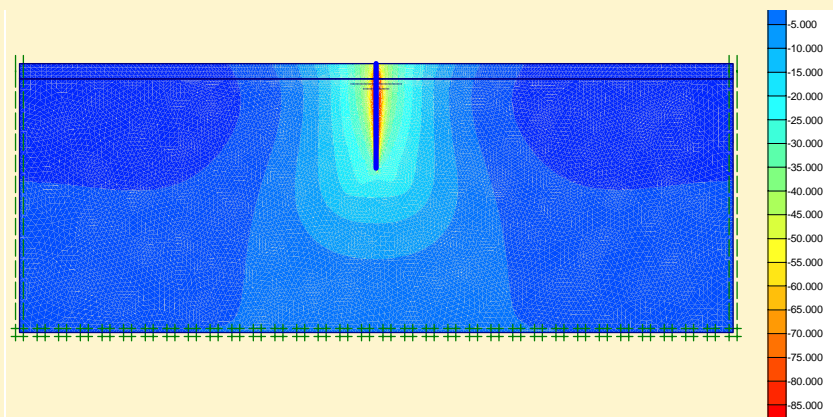
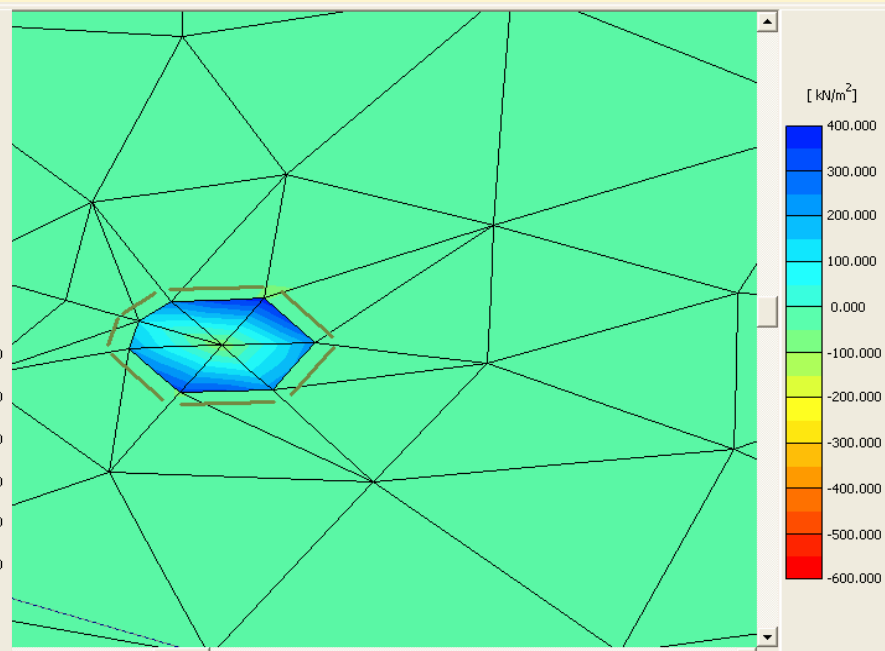
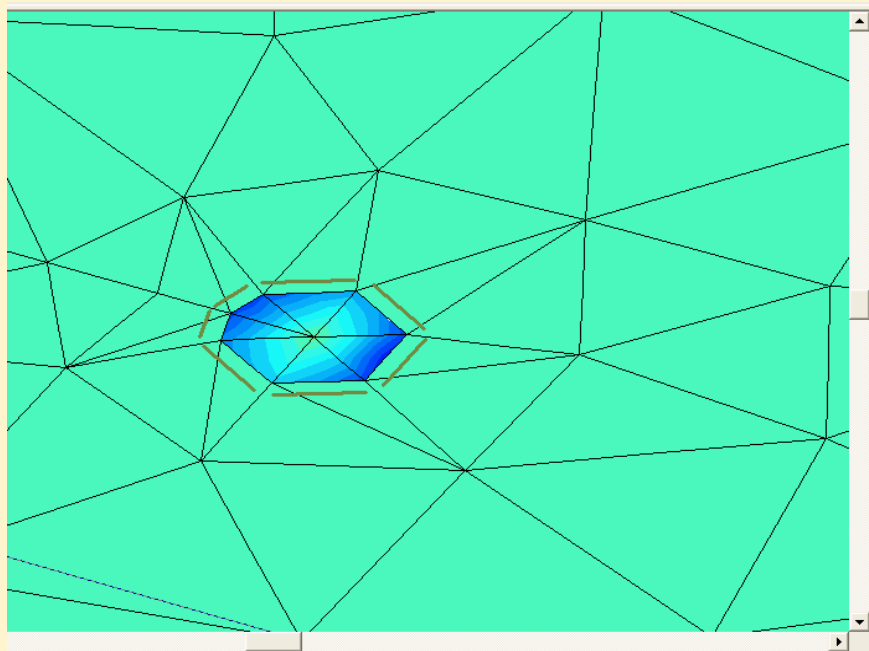


Mô hình 3D (Plaxis 3D foundation)



Mô hình 2D (Plaxis 8.2)





Kết quả: $U_y(\text{MH vật lý})=8\text{cm} > U_y(\text{3D-foundation})=7.9\text{ cm} > U_y(\text{2D-plaxis 8.2})=6.5\text{ cm}.$